



2022 -2023 Student Health Insurance Plan

University of Tampa Student Health Insurance Plan administered by
UnitedHealthcare Student Resources

UnitedHealthcare Student Resources
Presented by: Mandy Lance

22COL4431-629





Important Things To Know Your Coverage

UnitedHealthcare StudentResources

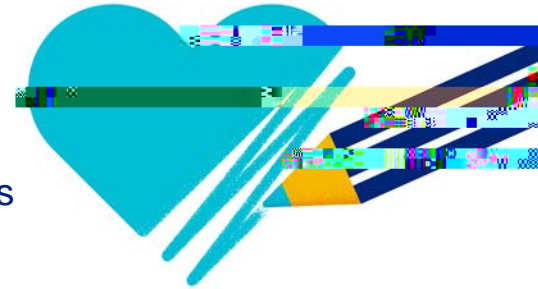
Important Things To Know

University of Tampa enrolls all students in school sponsored student health insurance plan administered by UnitedHealthcare Student Resources. Benefits include:

- Medical and prescription plan
- Telehealth
- StudentAssist
- Global Emergency Plan

- ✓ Once the university submits your enrollment to UHCSR you will receive an email with instructions detailing how to access your ID card and create your online account.
- ✓ It is important for you to create your online account.
- ✓ This is national coverage, not just for while you are at school.

Please



Highlights of Coverage and Service

	Preferred Providers	Out-of-Network Providers
<p>Preventive Care Services <i>Including but not limited to: annual physicals, GYN exams, routine screenings and immunizations. No Copay or Deductible when the services are received from a Preferred Provider. Please see www.healthcare.gov for complete details of the services provided for specific age and risk groups.</i></p>	100% of Allowed Amount	No Benefits
<p>The following services have per Service Copays/Deductibles <i>This list is not all inclusive. Please read the plan brochure for complete listing of Copays/Deductibles.</i></p>	<p>Physician's Visits: \$15 Copay Per Visit not subject to deductible</p> <p>Medical Emergency: \$125 after deductible The Copay will be waived if admitted to the Hospital</p>	<p>Medical Emergency: \$125 after Deductible The Copay will be Waived if admitted to the Hospital</p>
<p>UnitedHealthcare Global: Global Emergency Services</p>	<p>Domestic Students are eligible for UnitedHealthcare Global services when 100 miles or more away from your campus address and 100 miles or more away from your permanent home address. International students are covered worldwide except in their home country.</p>	
<p>Metallic Level - Gold</p>	<p>Network – UnitedHealthcare Choice Plus</p>	

*This table provides a brief summary of benefits under the plan. Exclusions and limitations may apply. Please refer to plan documents for a full description.

My Account

The screenshot displays the UnitedHealthcare StudentResources My Account dashboard. At the top, the UnitedHealthcare logo and 'StudentResources' are on the left, and a user profile labeled 'Student' with a 'ST ID' is on the right. A navigation bar below the header includes links for 'My Coverage', 'My Claims', 'My Benefits', 'Care Options', 'Messages', 'Action Center', and 'Need Assistance?'. The main content area is organized into several functional tiles:

- My Claims/Releases:** Includes 'Claims Summary' (history of pending & completed claims), 'Member Balances' (Deductible and Out-of-Pocket), and 'Submit Claim' (Request Reimbursement for your claims).
- My Benefits:** Features a 'Medical' section and 'Additional Benefits'.
- Care Options:** Includes 'Locate a Healthcare Provider', 'Find Mental Health Resources' (with a link to 'Review our Mental Health Services'), 'Student Health Center' (Your school's Student Health Center), and 'Telehealth Medical' (24/7 doctor access).
- ID Card:** Option to 'Print, View, or Request ID card'.
- 24/7 Care/Support:** 'Immediate access to a licensed clinician'.
- Coverage Information:** 'View coverage details'.
- Enroll Dependents:** 'Enroll dependents on your plan'.
- Pharmacy:** 'Pharmacy' link.
- Not Sure Where to Go:** 'Know where to go for care, costs, and cost'.
- PRA:** 'Apply for PRA'.
- Need Assistance?:** 'Explore It'.



Virtual Medical and Mental Health Care

